

mind's eye

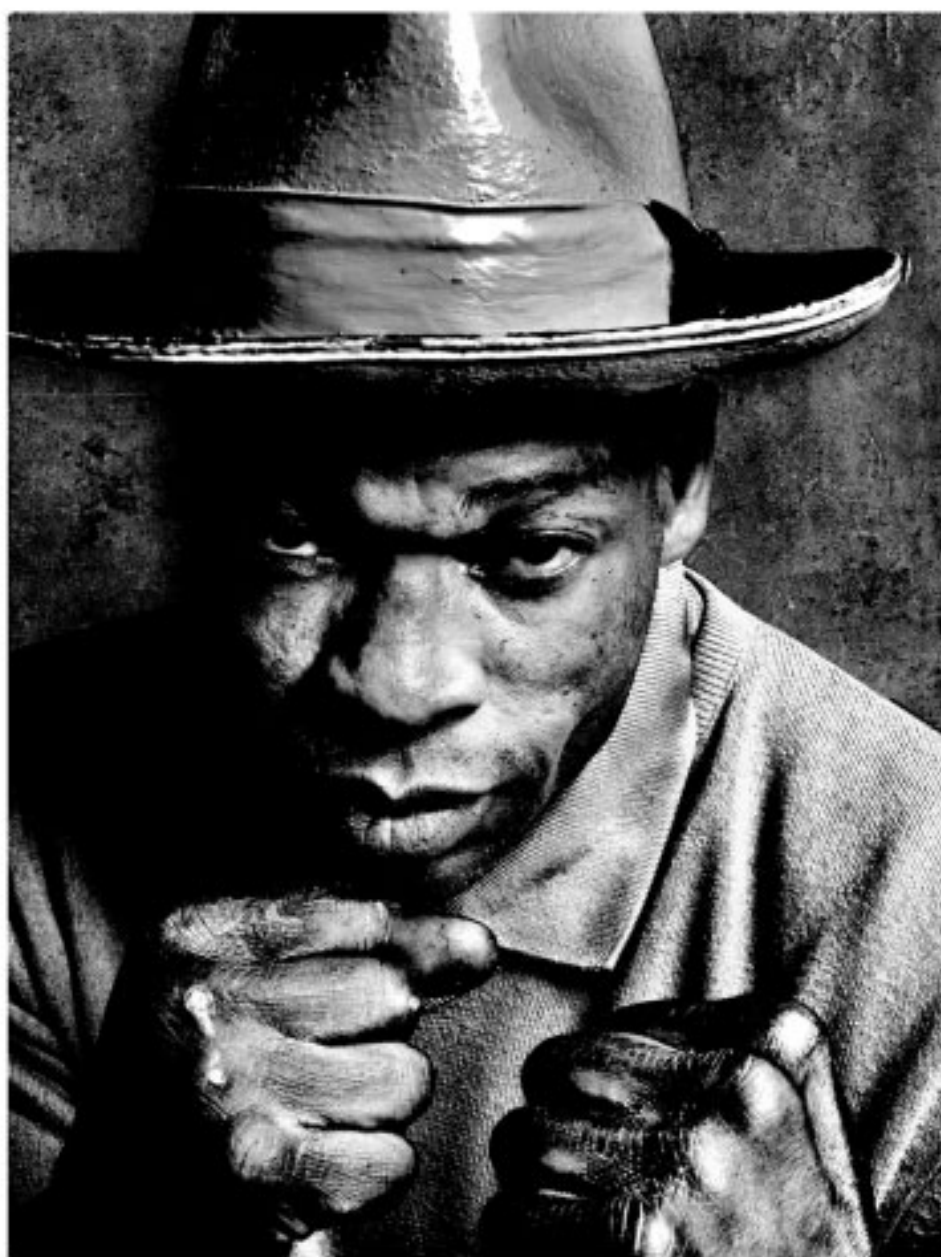
photographie

galerie adrian bondy

mathématique

JOHN CLARIDGE

The Hardest Game



Sylvester Mitter ©John Claridge

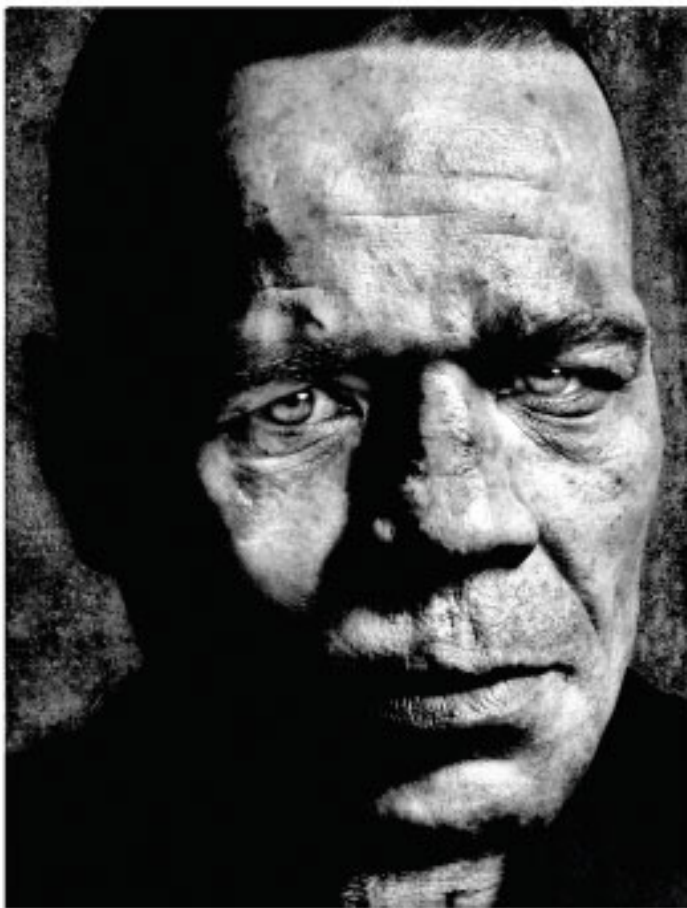
23/09/15 - 31/10/15

221 rue Saint-Jacques, 75005 Paris

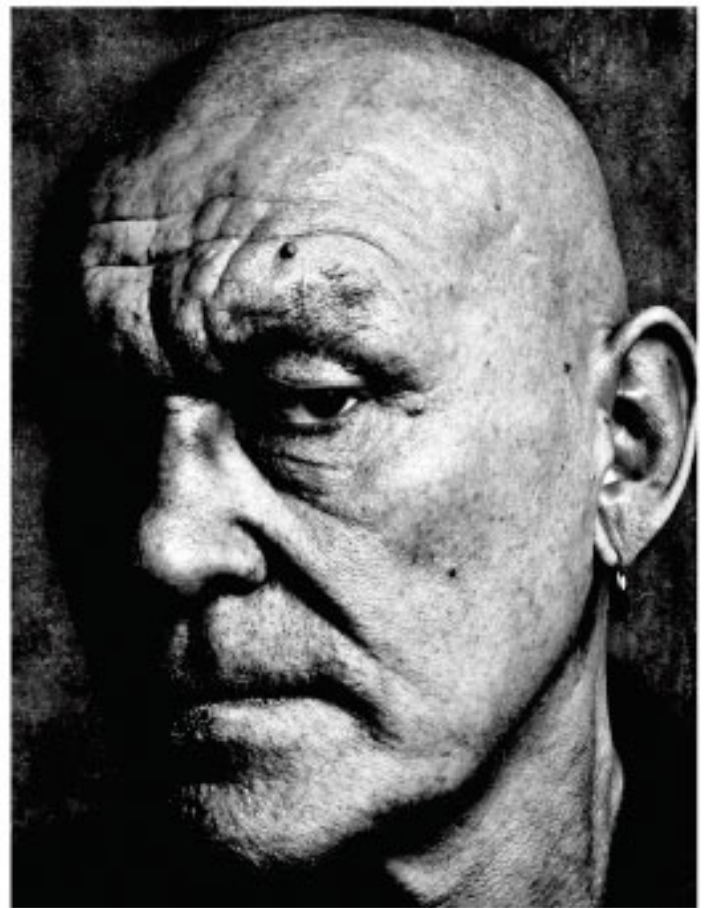
The trouble with boxing is that too often it ends in sadness.
Barry McGuigan

One year after his exhibition *Out of Shadows / Sorti de l'Ombre*, we are pleased to present thirty-one portraits of former boxers by the English photographer John Claridge. One recalls his powerful and expressive portraits of jazzmen (including Chet Baker) and of Navajo Indians.

John Claridge grew up in the East End of London, an underprivileged neighbourhood close to the docks, where one engaged in bare-knuckle fighting in order to earn a few pennies. His uncompromising, contrasty portraits bear witness to the hard life led by the residents of this quarter.

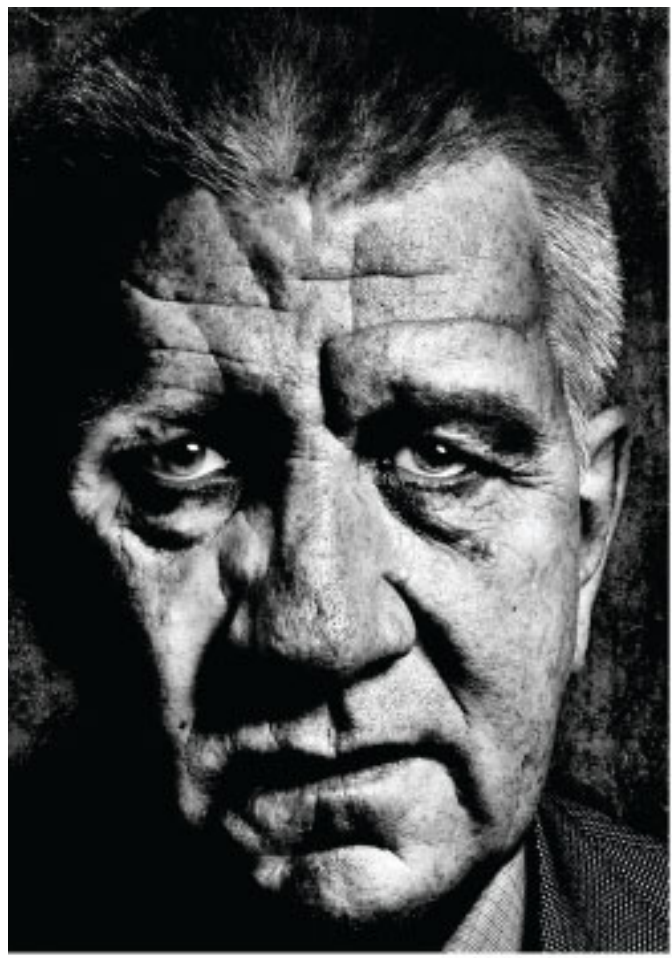


Rocky Kelly ©John Claridge

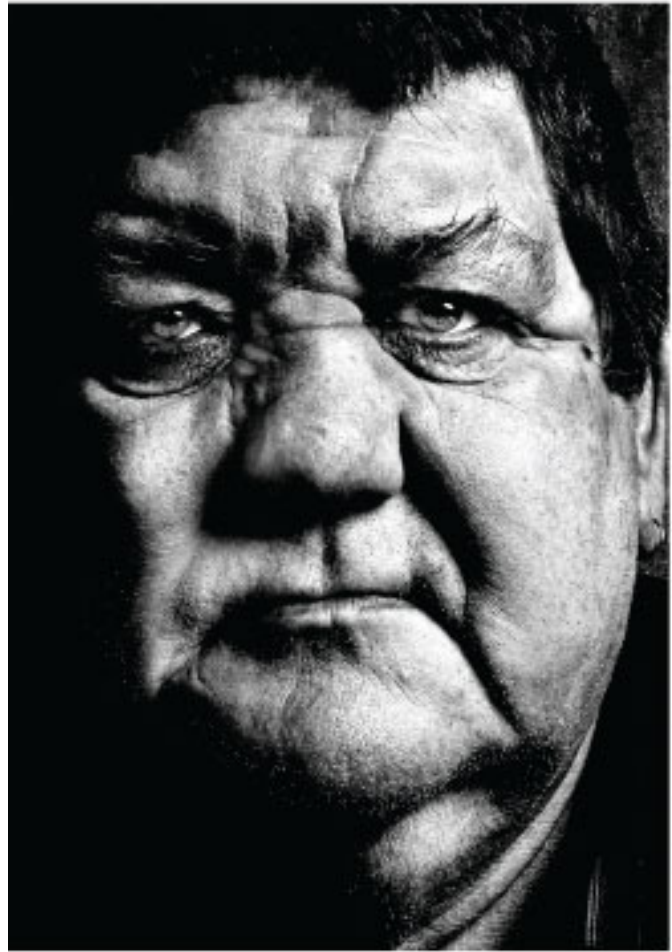


Dave Cooper ©John Claridge

Born in 1944, John Claridge left school at fifteen and took a job in the photography department at McCann-Erickson. In 1963, he opened a studio near St. Paul's Cathedral, specialising in magazine work and advertising. His work is held in many collections, notably the Arts Council of Great Britain, the Victoria & Albert Museum, the National Portrait Gallery, and the Museum of Modern Art. He lives and works in the Aveyron.



John Powell ©John Claridge



Paul Watford ©John Claridge

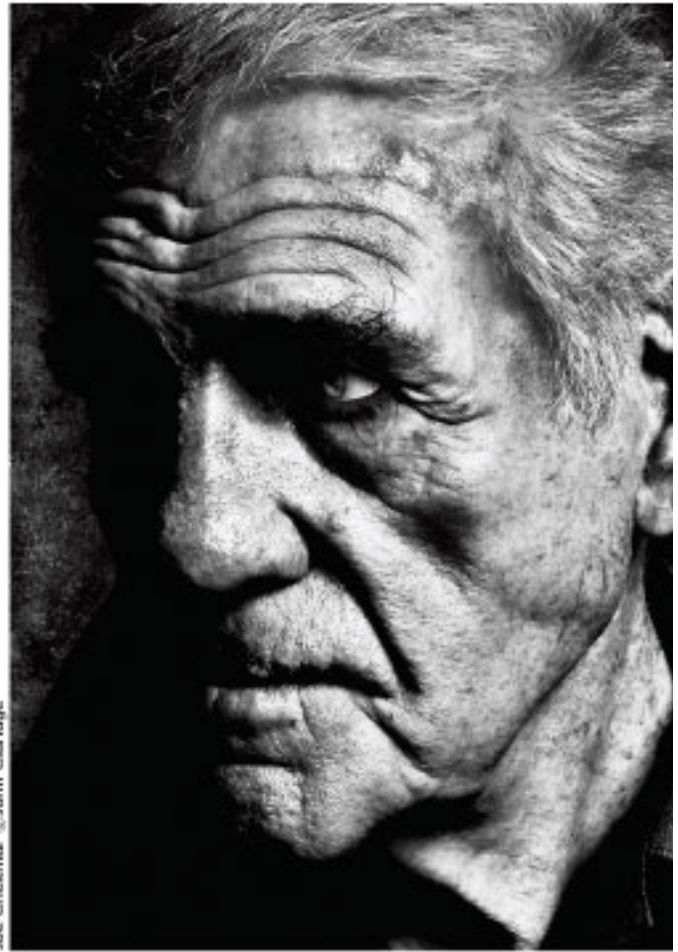
My dad was a bare-knuckle fighter in the 30's, among many other things, in the dock area of the East End of London. He also fought in New York in the 30's. When I was a kid I wanted to take some pictures of him and told him I'd make him look good. He told me to take a hard picture of him, adding "Don't look at the lines, look deeper. A lot of living and a bit of suffering went into how I look. Don't forget that." I've tried not to in the following pictures.

Sylvester Mittee ©John Claridge

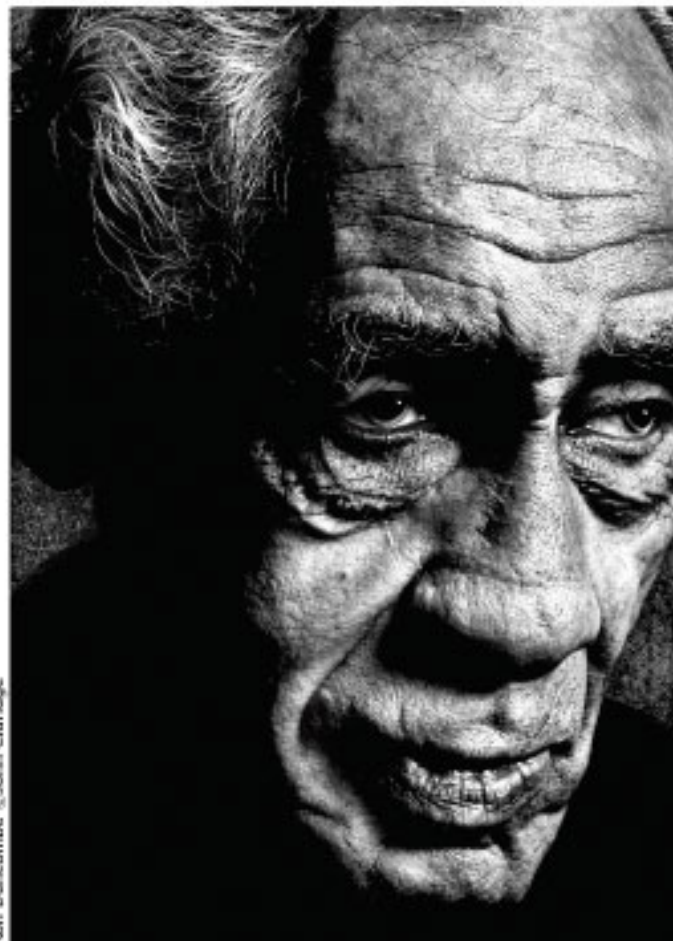
John Claridge

I believe these are important national treasures. Not only as tough, close-up and personal portraits of the inner soul, but as a nearly unparalleled social document. The hard prints emphasise the hard life. Don McCullin went to war to get great pictures, if he's not envious of these he's a bloody saint. Why do I get the feeling no-one else could have taken these? Knockout. I feel honoured to see them.

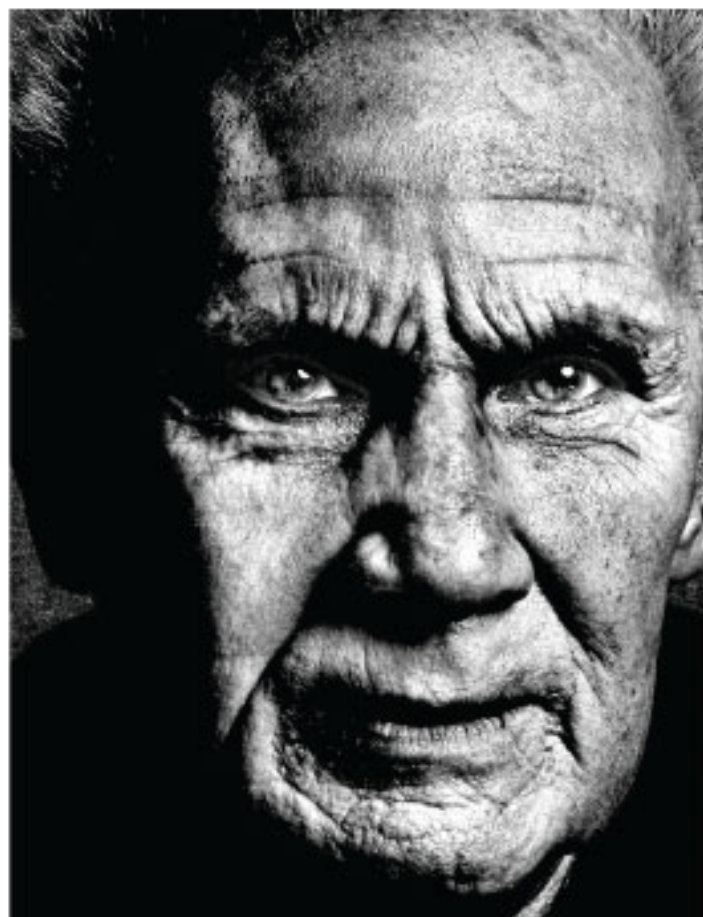
Alan Fleming



Joe Crickmar ©John Claridge



Ron Duncombe ©John Claridge



John Micallef ©John Claridge

JOHN CLARIDGE

The Hardest Game

exhibition

23 September - 31 October 2015
Wednesday - Saturday 3 - 7 pm

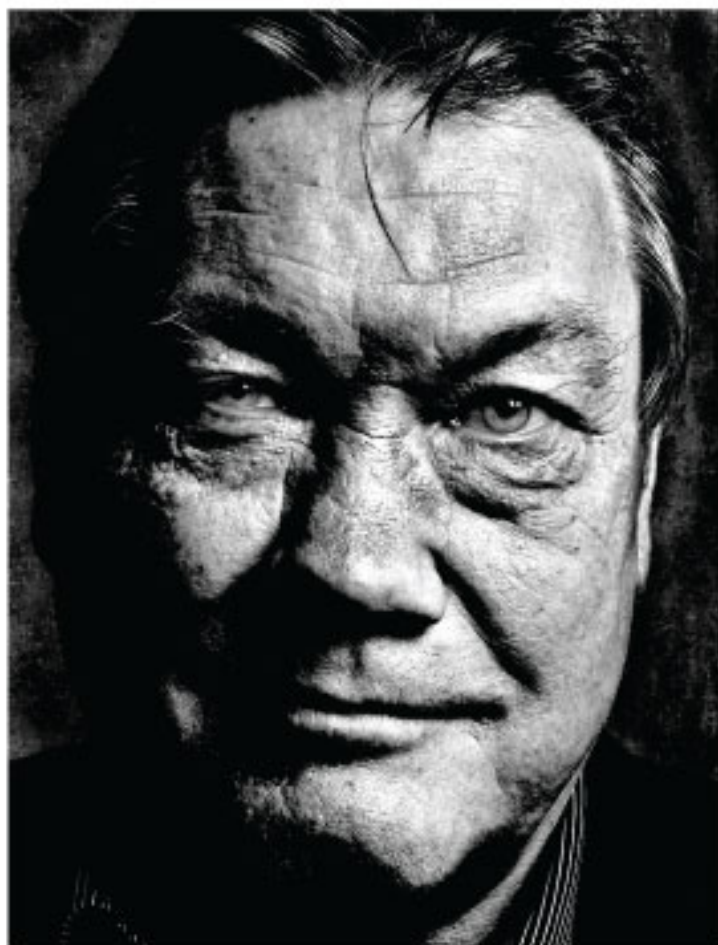
opening

26 September 2015 6 - 9 pm
in presence of the artist

contact *Adrian Bondy*
adrian.bondy@mindseye.fr
06 85 93 41 92

website
www.mindseye.fr

public transport
bus 21 27 38 82 83 84 85 89 91
RER Luxembourg
vélib St Jacques - Gay Lussac
autolib in front of the gallery



Micky Oats ©John Claridge

mind's eye / galerie adrian bondy

221 rue Saint-Jacques, 75005 Paris