

POMEGRANATE FINE ART

# STORYLINE...

AN EXHIBITION OF THE WORKS OF ARTIST ILLUSTRATORS

AT THE DAHL GALLERY , NORWEGIAN CHURCH  
9<sup>TH</sup> - 15<sup>TH</sup> (SEE PAGE 3 FOR OPENING TIMES EACH DAY)

NOVEMBER 2015 IN SUPPORT OF



<http://www.printed-editions.com/gallery/pomegranate-fine-art>

# STORYLINE...REVEALED...

COME AND CELEBRATE ARTIST ILLUSTRATORS, FEATURING:

JOHN ABELL, PETER BLAKE, HARRY BROCKWAY, JOHN CLARIDGE, NATALIE D'ARBELOFF, ELIZABETH FRINK, ANTHONY GROSS, BERT ISAAC, PAUL JENKINS, RALPH KIGGEL, JOHN LAWRENCE, ANGELA LEMAIRE, REG LLOYD, ALYSON MACNEILL, ROBERT MACDONALD, JOHN MCLEAN, GARRICK PALMER, JOHN PIPER, CERI RICHARDS, MICHAEL ROTHENSTEIN .....AND OTHERS...

ILLUSTRATED BOOKS **AS WELL AS** INDIVIDUAL PRINTWORKS.

THIS IS ALSO AN OPPORTUNITY TO CELEBRATE AND SUPPORT THE WORK OF  
SHELTER CYMRU.

WHAT'S NOT TO LOVE?? COME AND ENJOY.

# STORYLINE... THE CRITICAL DETAILS.

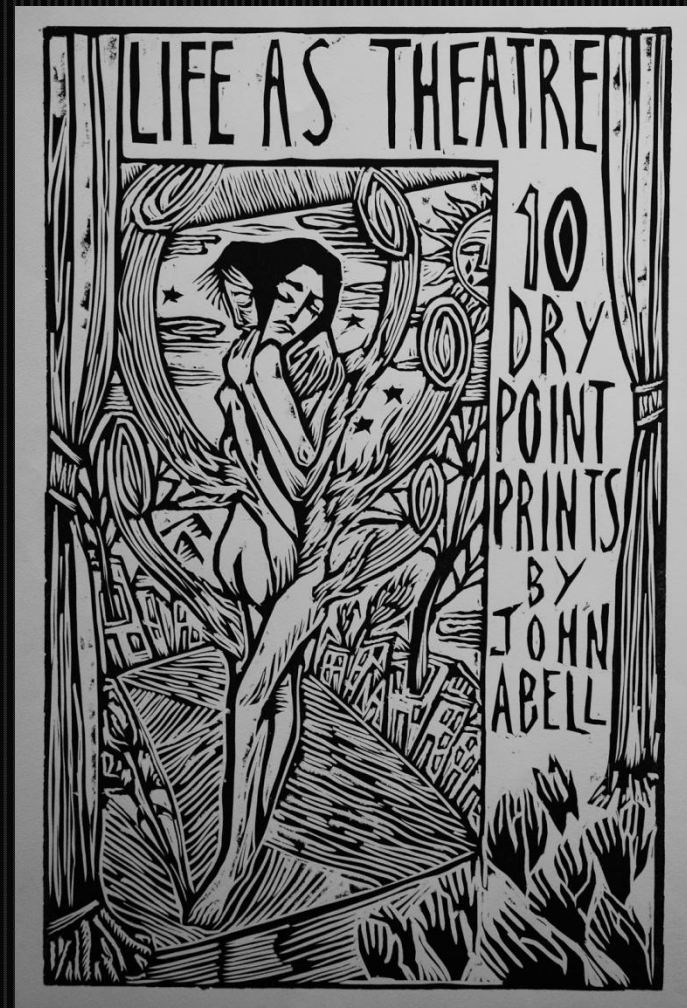
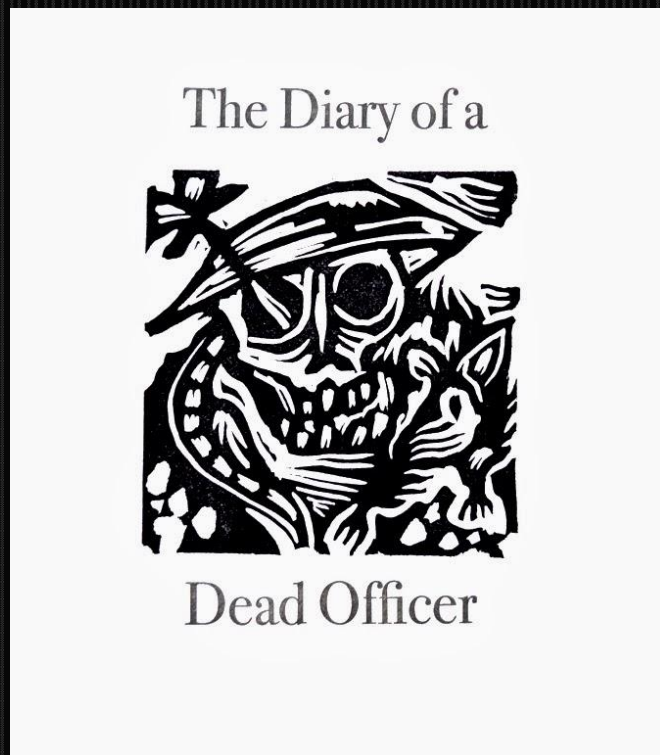
**WHERE:** NORWEGIAN CHURCH : DAHL GALLERY, HARBOUR DRIVE,  
CARDIFF BAY, CF10 4PA

## OPENING TIMES:

- **LAUNCH EVENT: MONDAY 9<sup>TH</sup>**  
**NOVEMBER, 6.30-8.30PM**
- **DAILY: MONDAY 9<sup>TH</sup> NOVEMBER TO SATURDAY, 11AM UNTIL 4PM...**  
**-BUT NOT OPEN FRIDAY 13<sup>TH</sup> (THERE'S A WEDDING GOING ON ☺)**
- **LAST DAY SUNDAY 15<sup>TH</sup>: 11AM 'TIL 2PM.**

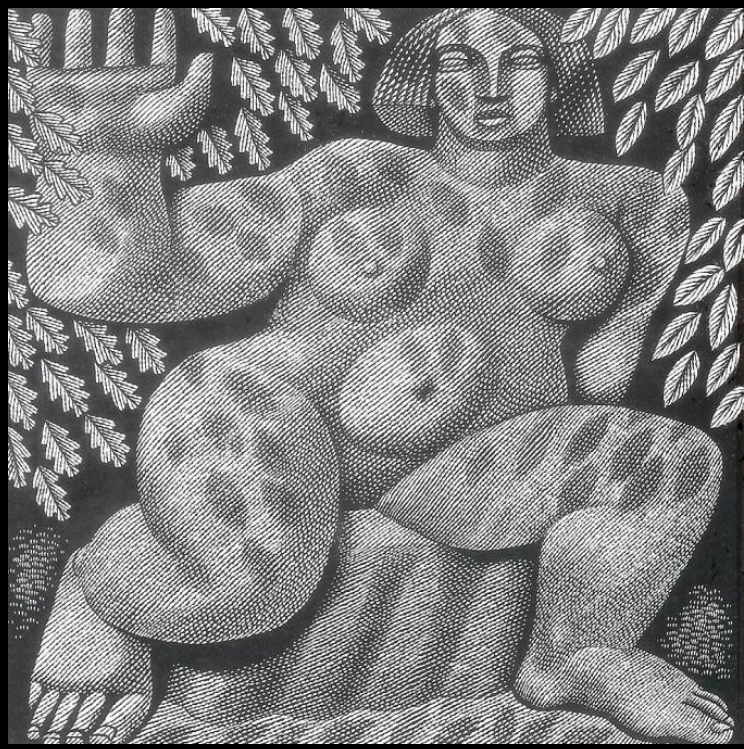
COME AND ENJOY THE ART, THE BOOKS, THE  
NORWEGIAN CHURCH, THE BAY...

John Abell: Diary of a  
Dead Officer/Theatre of  
Life. (Old Stile Press)



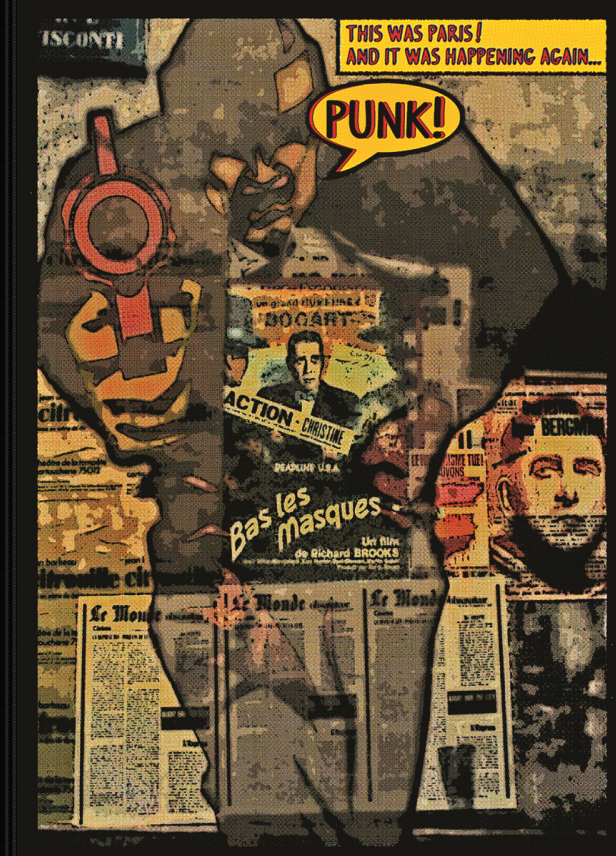


Harry Brockway: Be Still/  
Mapping Golgotha –  
Dulce et decorum est.  
(Old Stile Press/  
Gregynog Press)

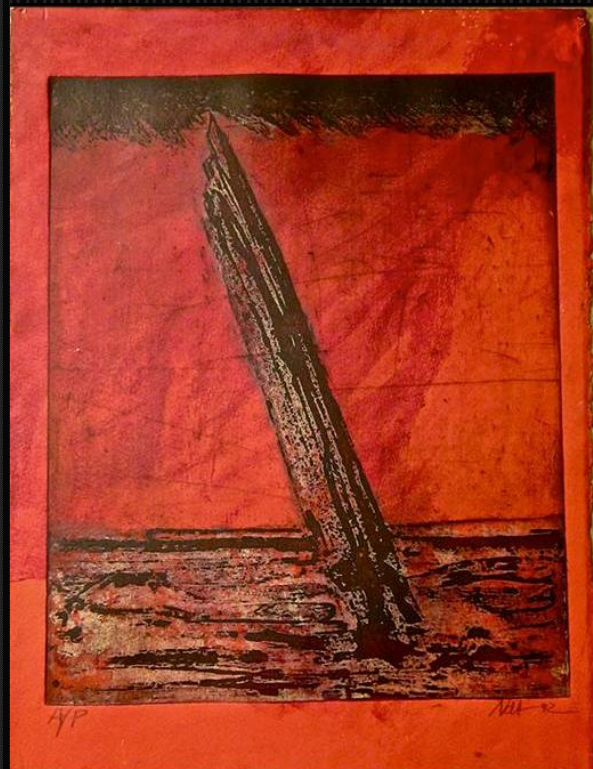




## John Claridge: Fish/ Punk.



Natalie d'Arbeloff:  
Creation: Archas/Fallen  
Angels. (nDA Press)



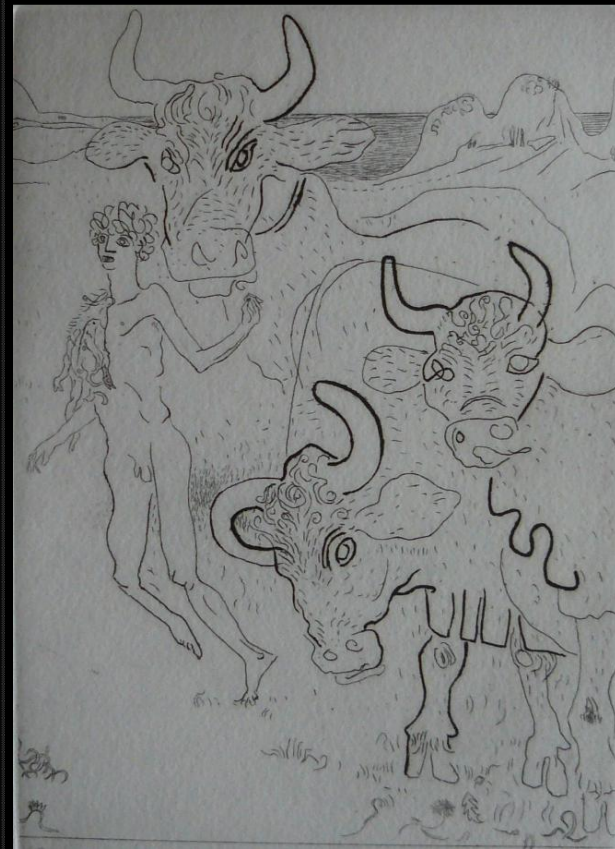


Elisabeth Frink:  
Canterbury Tales/  
Summoner's Tale; Aesop's  
Fables/ Eagle (Curwen  
Press).

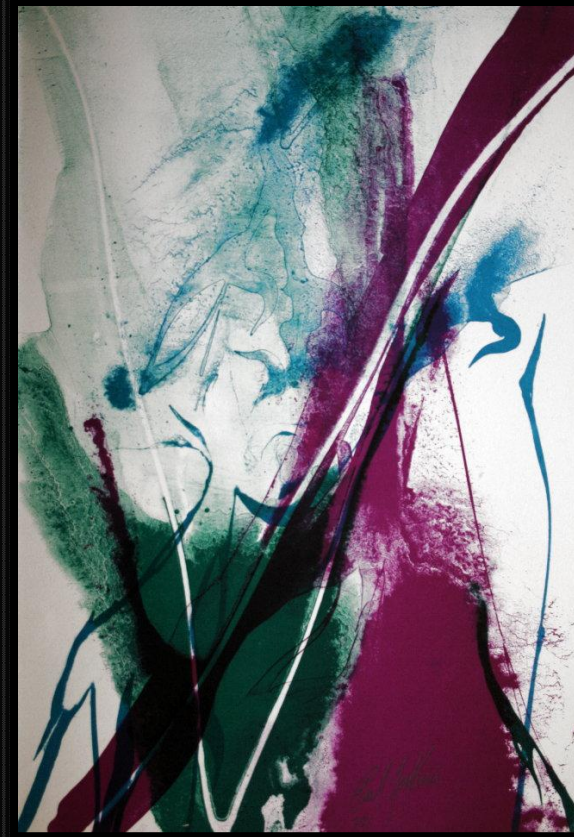
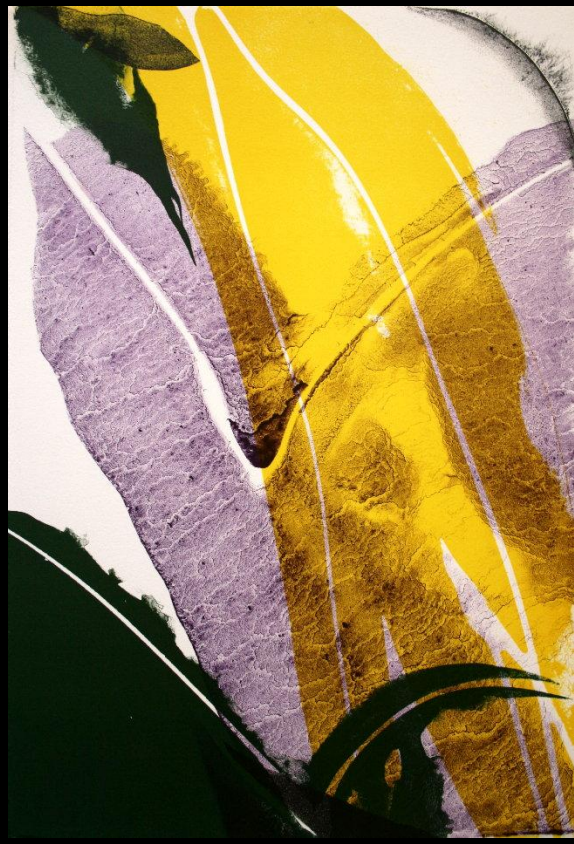




Anthony Gross: Sixe  
Idyllia of Theocritus  
(Chilmark Press)

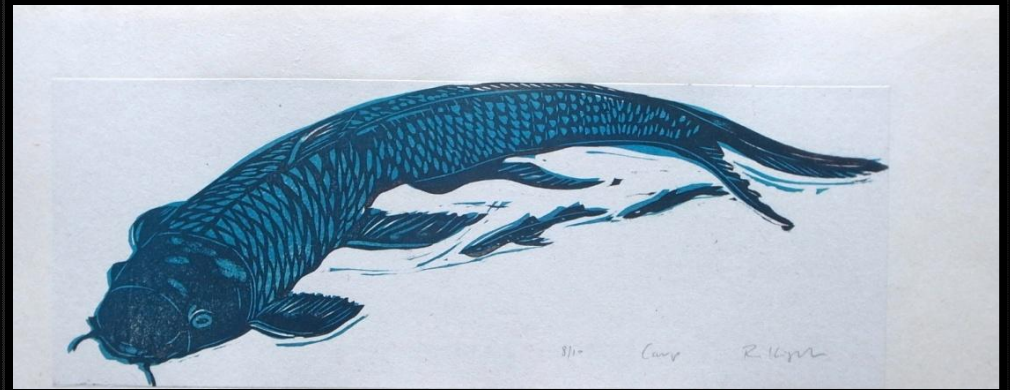


Paul Jenkins: Seeing  
Voice, Welsh Hearts  
(Fernand Mourlot Press)





Ralph Kiggell: Unknown  
Soldier/ Carp (from The  
Third Thing, Old Stile  
Press)

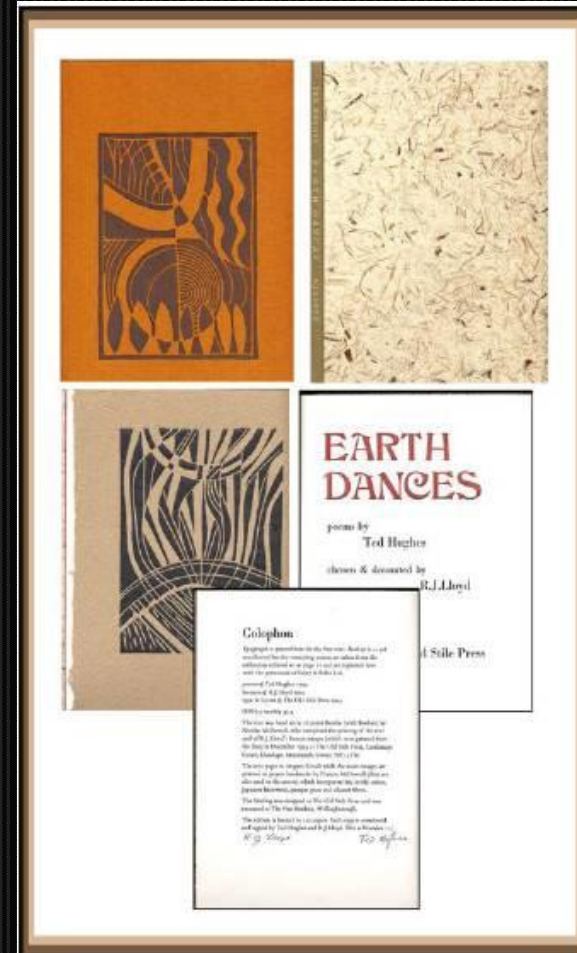




Angela Lemaire: The  
Dream of the Rood/The  
Shepherds Leave (from a  
Christmas Sequence, Old  
Stile Press)

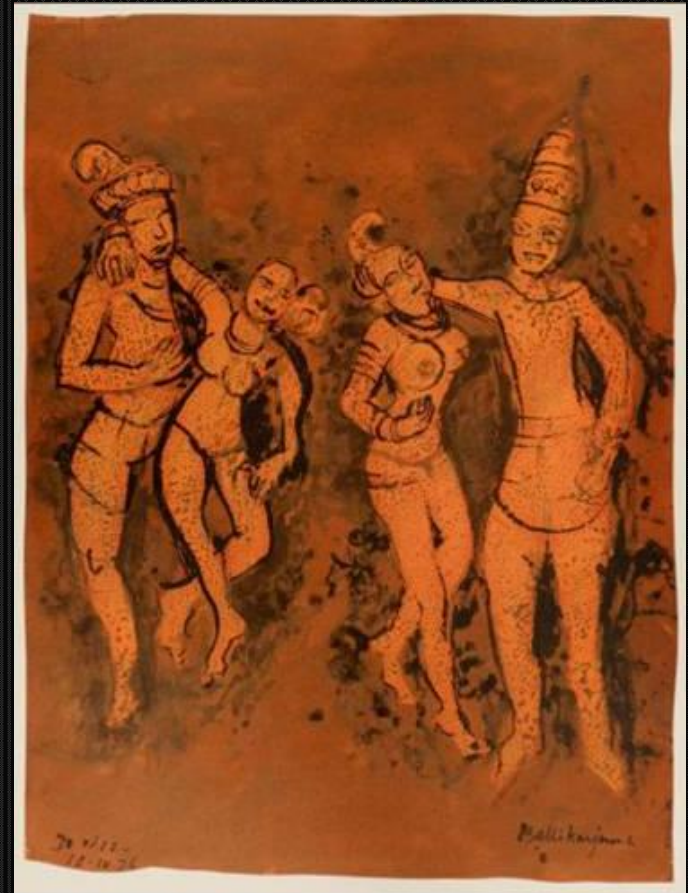


# Reg Lloyd: Illustrations from Earth Dances (Old Stile Press)





John Piper: illustrations  
from Indian Love Poems  
(Senecio Press)





Paula Rego: illustrations  
form Jayne Eyre/Fogo  
Fuocco.

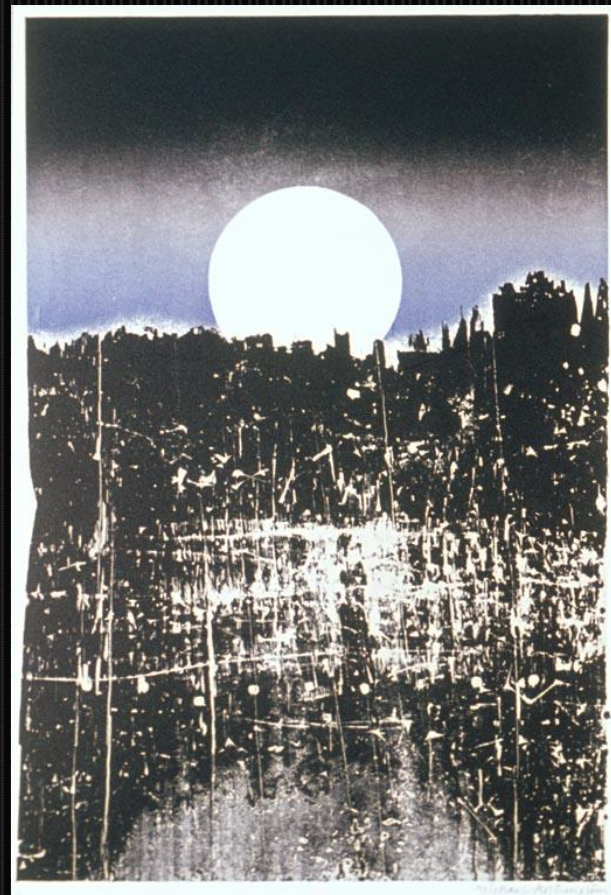
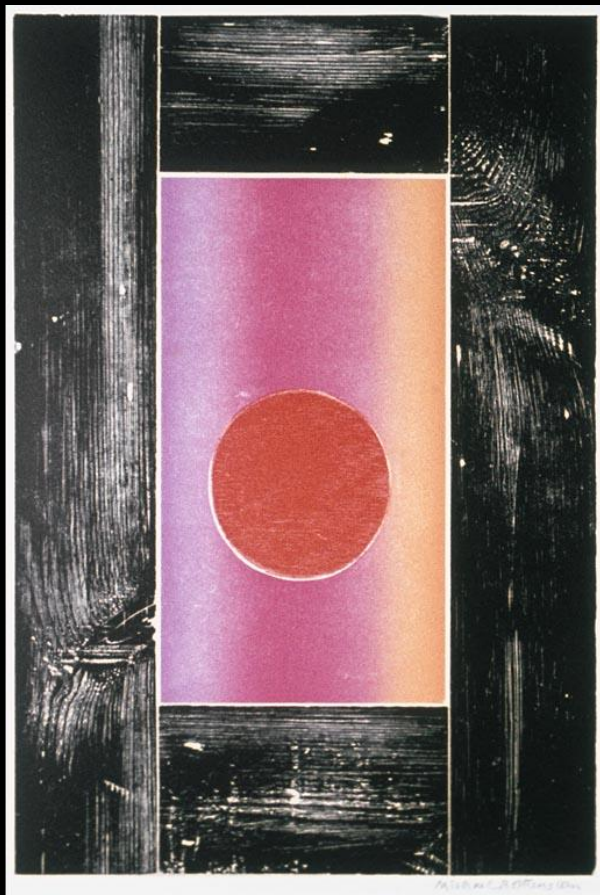


Ceri Richards, Death  
Shall have no Dominion  
(Curwen Press) Captain  
Cat (BAS Printers)





Michael Rothenstein, Suns  
and Moons: Sun Rising  
/Crazed Moon. (Rampant  
Lions Press)





*"For more than 30 years, Shelter Cymru has been working tirelessly to prevent homelessness in Wales ... I am very proud to support a charity that has such a long history of supporting some of the most vulnerable people in our society."*

Bryn Terfel CBE President of Shelter Cymru

We all deserve the right to a safe home. Shelter Cymru is Wales' people and homes charity. We provide a lifeline to families across Wales at risk of homelessness or in housing need. We believe tackling homelessness is not just about getting people off the streets. It's also about finding lasting solutions to stop people becoming homeless in the first place. We work with families to solve their housing problems and we campaign for change, to tackle the root causes of the housing crisis so that, one day, no one will have to turn to us for help.

Across Wales, we have supported over 15,000 people and successfully prevented homelessness in 85% of cases where it was threatened. In the current economic climate demand for our services remains at a record high, with 240,000 people accessing our advice online pages in 2014-15 – an increase of over 250% on 2013-14. In recognition of this growing need, we have just launched a Wales-wide helpline in order to be there for more families across Wales at risk of losing their homes. All this at a time when funding for our services continues to be cut. Fundraising is important to us and critical for the families and individuals we help.

Thank you for taking the time to consider supporting Shelter Cymru.